

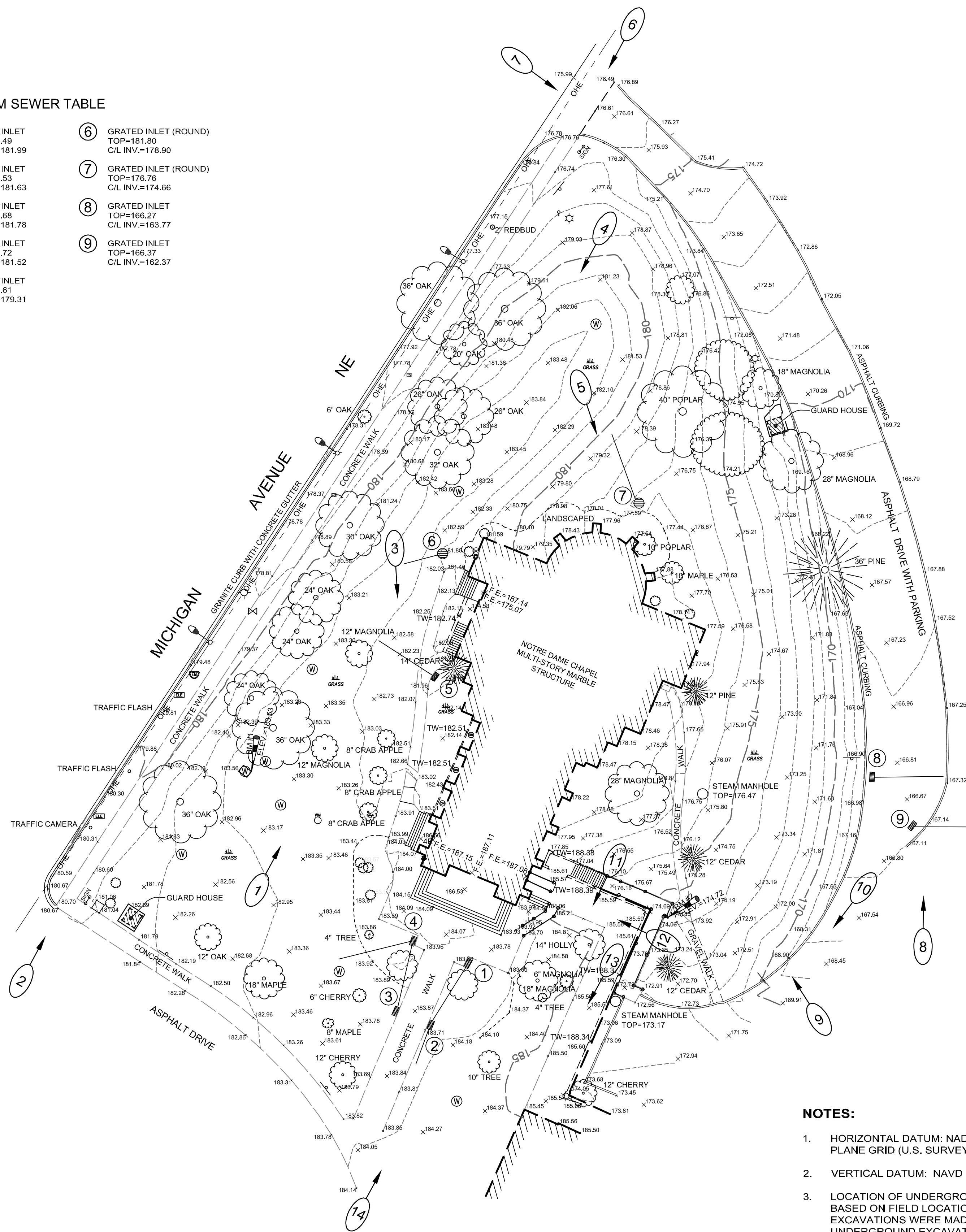
NAD 83 (CORS) MD STATE PLANE

STORM SEWER TABLE

① GRATED INLET TOP=183.49 C/L INV.=181.99	⑥ GRATED INLET (ROUND) TOP=181.80 C/L INV.=179.90
② GRATED INLET TOP=183.53 C/L INV.=181.63	⑦ GRATED INLET (ROUND) TOP=179.76 C/L INV.=174.66
③ GRATED INLET TOP=183.66 C/L INV.=181.78	⑧ GRATED INLET TOP=166.27 C/L INV.=163.77
④ GRATED INLET TOP=183.72 C/L INV.=181.52	⑨ GRATED INLET TOP=166.37 C/L INV.=162.37
⑤ GRATED INLET TOP=181.61 C/L INV.=179.31	

LEGEND

- ⊗ WATER VALVE
- ⊕ WATER MANHOLE
- ⊙ FIRE HYDRANT
- ⊙ SPIGOT
- ⊙ SPRINKLER HEAD
- ⊙ WATER METER
- ⊙ STORM GRATE ROUND
- ⊙ DRAIN
- ⊙ GRATE INLET
- ⊙ STEAM MANHOLE
- ⊙ SIGN
- ⊙ ELECTRIC PULL BOX
- ⊙ UTILITY POLE
- ⊙ LAMP
- ⊙ ELECTRICAL CONDUIT
- ⊙ ELECTRIC METER
- ⊙ TREE
- ⊙ SHRUB
- ⊙ GRASS
- ⊙ TEST STATION
- ⊙ GAS VALVE
- ⊙ POST
- ⊙ BENCHMARK
- ⊙ HANDRAIL
- ⊙ OVERHEAD ELECTRIC
- ⊙ PLANTER
- ⊙ SHRUBS



SITE PHOTOS WITH ASSOCIATED POSITION AND DIRECTION

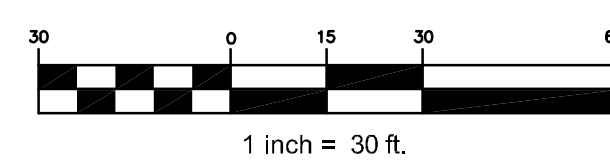


NOTES:

1. HORIZONTAL DATUM: NAD 83 (CORS), EPOCH 2002, MARYLAND STATE PLANE GRID (U.S. SURVEY FEET)
2. VERTICAL DATUM: NAVD 88 (U.S. SURVEY FEET)
3. LOCATION OF UNDERGROUND UTILITY LINES SHOWN HEREON ARE BASED ON FIELD LOCATION OF PHYSICAL STRUCTURES. NO EXCAVATIONS WERE MADE TO VERIFY UNDERGROUND LOCATIONS. UNDERGROUND EXCAVATION WILL NEED TO BE COORDINATED WITH MISS UTILITY AT THE TIME OF EXCAVATION. 1-800-257-7777.
4. ADDITIONAL SPOT SHOTS CAN BE VIEWED IN THE DIGITAL FILE BY TURNING ON AND UNFREEZING LAYERS.
5. IMAGES AND ASSOCIATED SYMBOLS ALL RESIDE ON THE V-ANNO-IMAG LAYER, WHICH CAN BE TURNED OFF AND FROZEN WHEN NOT NEEDED.
6. ALL DRAINAGE LINES APPEAR TO BE 6" CAST IRON.



8115 FENTON ST. STE 201 • SILVERSPRING, MD 20910
P:202-652-0184 • F:202-330-5311 • http://www.thothsurveying.com



SHEET 1 of 1

TOPOGRAPHIC SURVEY
TRINITY COLLEGE PROJECT NO. :10-018-01
CATHOLIC UNIVERSITY WASHINGTON, D.C.
FILENAME TOPO_10-018.dwg
DATE: JUNE 2010