

REFERENCES
ALL REFERENCES REFER TO DOCUMENTS RECORDED WITH THE D.C. SURVEYORS OFFICE UNLESS OTHERWISE NOTED.

WASHINGTON AQUEDUCT DIVISION
(DOCUMENTS PROVIDED BY THE U.S.A.C.E.)

- REAL ESTATE PLAT - WASHINGTON AQUEDUCT, DATED FEB 1955
- MAP OF DISTRIBUTING RESERVOIR, DATED MAY 1861 (COPIED 1893 & 1956)
- WASHINGTON AQUEDUCT PROPERTY MAP, DATED DEC. 1913

SQUARE 1387

- COUNTY BOOK 8 PG 15
- SUBDIV BOOK 102 PG 164
- SUBDIV BOOK 30 PG 87
- SUBDIV BOOK 153 PG 80
- REG SURV LT816
- REG SURV LT89
- WC 58-61
- WC 28

NATIONAL PARK SERVICE U.S. RESERVATION 404

- NPS PLAT DATED SEPT. 23, 2002

SQUARE 1359 (U.S. RESERVATION 403)

- COUNTY BOOK 8 PG 124
- SURVEY BOOK 87 PG 224
- MAP 1359
- MAP 3980
- NPS PROVIDED PAPERS OF TRANSFER

SQUARE 1361 (U.S. RESERVATION 469)

- COUNTY BOOK 8 PG 124
- SUBDIV BOOK 148 PG 146
- SUBDIV BOOK 132 PG 162
- NPS PROVIDED PAPERS OF TRANSFER

SQUARE 1361N LOT 801 : PARCEL 9/3

- CAPITAL TRANSIT COMPANY PLAT 12/26/1939
- PLAT OF COMPUTATION S.O. 28649
- SURV BOOK 170 PG 127

PARCEL 300/1

- MAP 9043
- MAP 5129
- MAP 555
- MAP 4059

MCARTHUR BOULEVARD
(Old Conduit Road)

- COUNTY BOOK 8 PG 138
- SUBDIV BOOK 85 PG 52
- SUBDIV BOOK 101 PG 15A
- SUBDIV BOOK 101 PG 15B
- SUBDIV BOOK 110 PG 30B
- SUBDIV BOOK 121 PG 45

GENERAL NOTES:

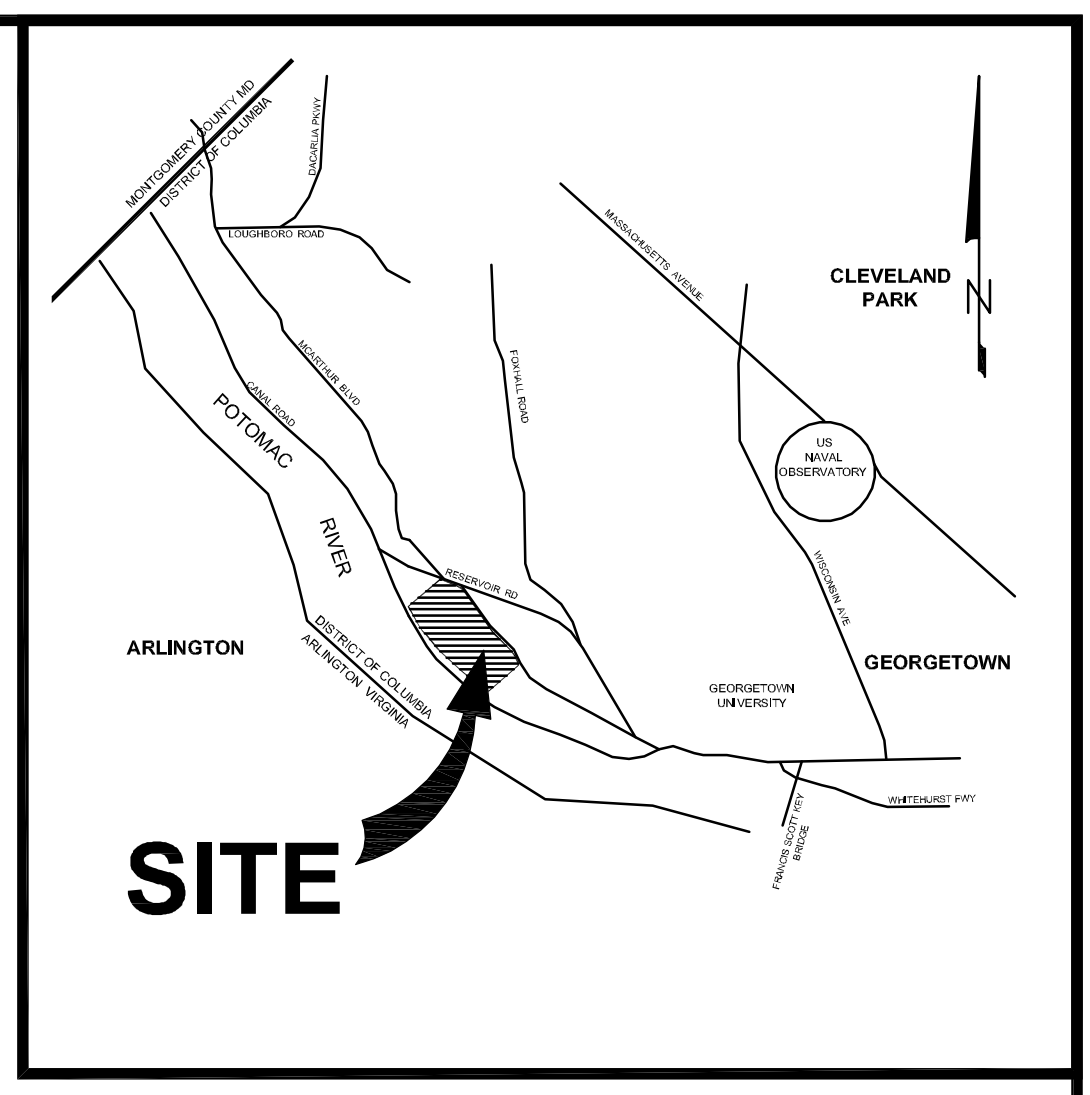
- HORIZONTAL DATUM: NAD 83/07 MARYLAND STATE PLANE GRID (U.S. SURVEY FEET)
- BOUNDARY INFORMATION SHOWN HEREON IS BASED ON A FIELD SURVEY AND RESEARCH WITH THE D.C. SURVEYOR'S OFFICE, THE UNITED STATES CORPS OF ENGINEERS BALTIMORE REAL ESTATE DIVISION, THE UNITED STATES CORPS OF ENGINEERS WASHINGTON AQUEDUCT DIVISION, THE NATIONAL PARK SERVICE AND THE NATIONAL ARCHIVES.
- BREWER MAP 9 OF THE AQUEDUCT PROPERTY WAS NOT AT THE D.C.S.O. AND UNABLE TO BE RECOVERED IN THE NATIONAL ARCHIVES.
- MONUMENTS SET ALONG ALL MAJOR CORNERS EXCEPT DEFLECTIONS AND POINTS OF CURVATURE ALONG MCARTHUR BOULEVARD.

SURVEYOR'S CERTIFICATE

I hereby certify that in April 2011, I made an on the ground survey of the property shown hereon.

Thomas Gregory Pendleton, LS901543

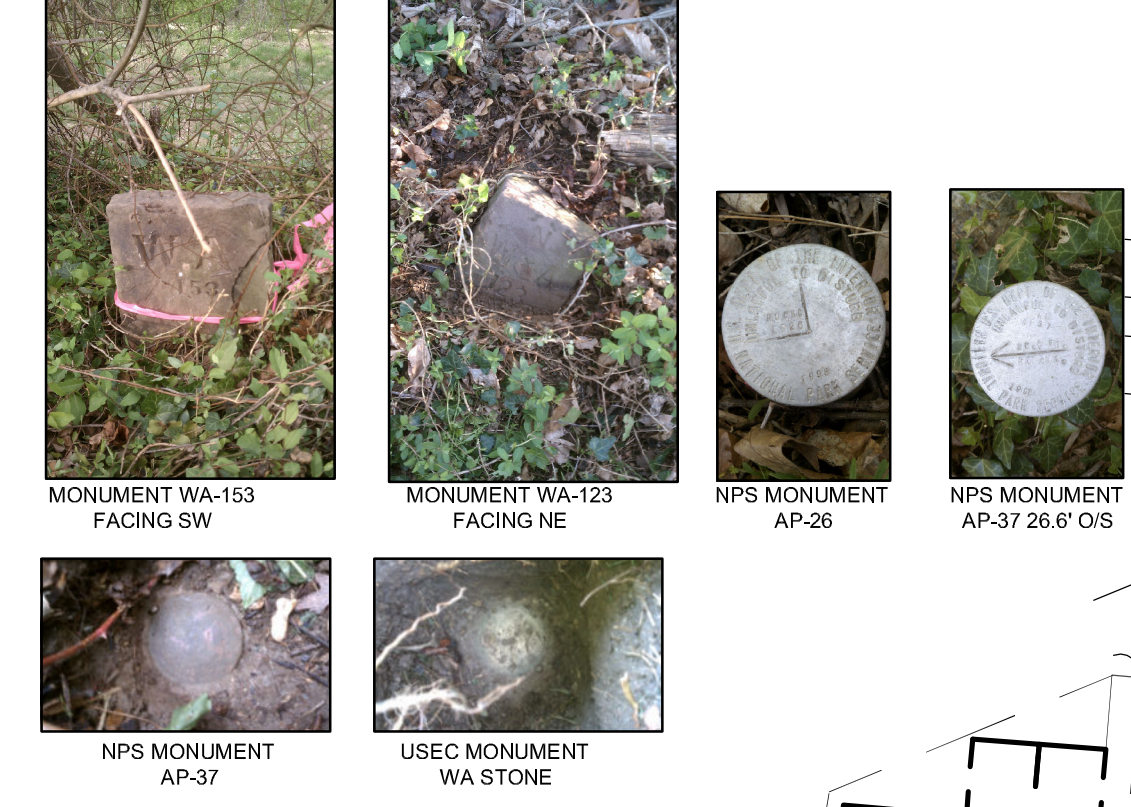
May 6, 2011



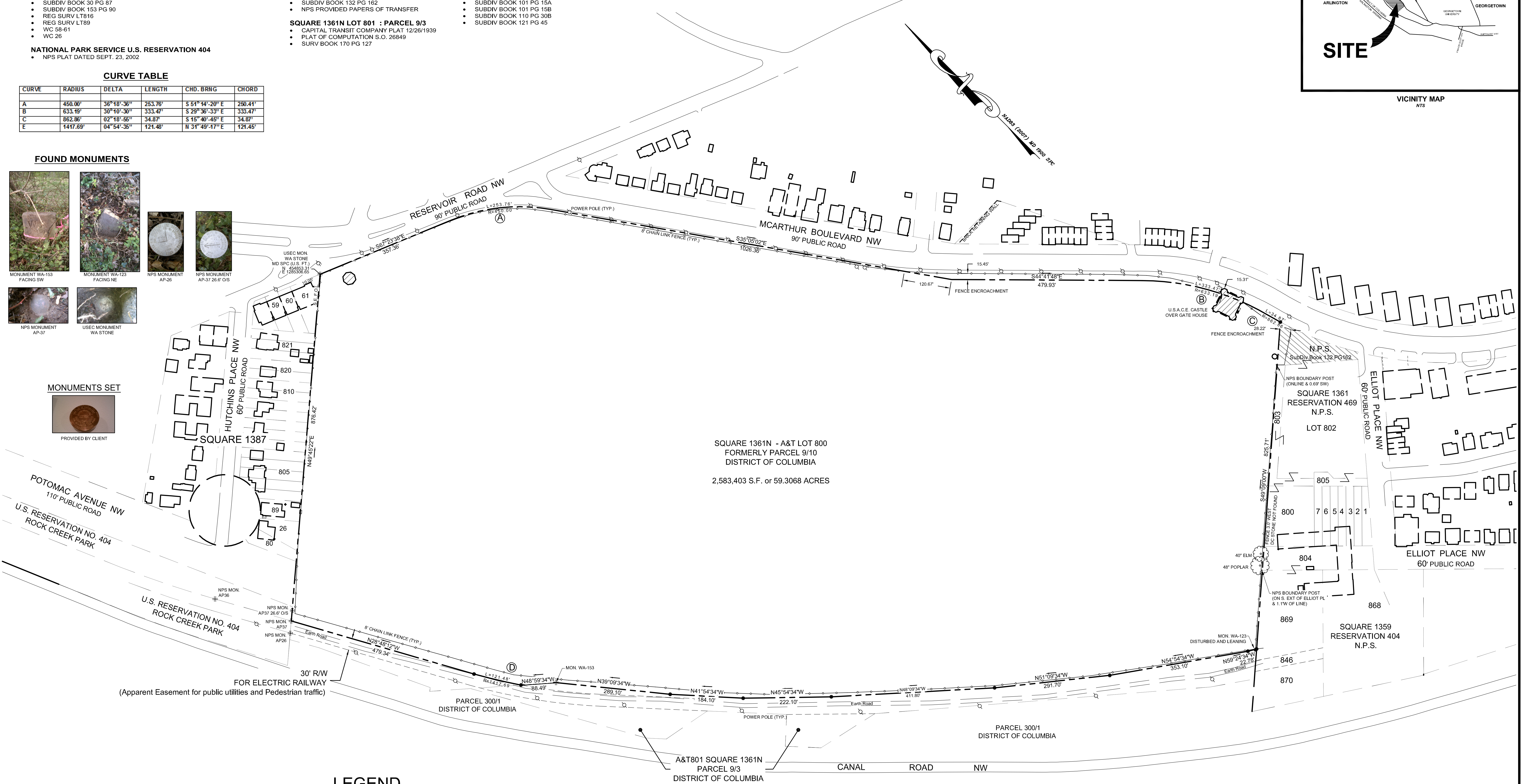
CURVE TABLE

CURVE	RADIUS	DELTA	LENGTH	CHD. BRNG	CHORD
A	450.00'	36°18'-36"	253.76'	S 51°14'-20" E	250.41'
B	633.78'	30°10'-30"	333.47'	S 29°36'-33" E	333.47'
C	862.86'	02°18'-56"	34.87'	S 15°40'-48" E	34.87'
E	1417.89'	04°54'-35"	121.48'	N 31°49'-17" E	121.45'

FOUND MONUMENTS



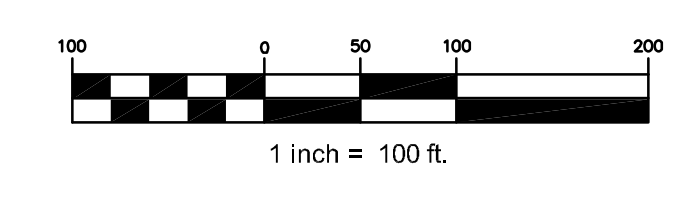
MONUMENTS SET



SQUARE 1361N - A&T LOT 800
FORMERLY PARCEL 9/10
DISTRICT OF COLUMBIA
2,583,403 S.F. or 59.3068 ACRES

LEGEND

- BRASS MONUMENT SET
- MONUMENT FOUND
- POWER POLE
- PROPERTY LINE
- ADJACENT PROPERTY LINE
- BUILDING
- DIRT ROAD
- PAVED ROAD
- CHAIN LINK FENCE
- S.E. F.O.L.
- SOUTH EAST BUILDING FACE ON LINE



BOUNDARY SURVEY
WASHINGTON AQUEDUCT DIVISION
DISTRIBUTION RESERVOIR

GEORGETOWN, WASHINGTON, D.C.

FILENAME: AQUEDUCT_MD_SPC.dwg
REV: JUNE 01, 2011
DATE: MAY 04, 2011